



Lauren Howard
Travel Designer
How We Travel

0413516070

lauren@howwetravel.com.au
<https://www.howwetravel.com.au>



Enchanted Pathways of Japan by How We Travel

May 12, 2025 - May 27, 2025

\$15795.00 per person twin share per person

Information & Documents



Embark on an Unforgettable Journey with "Enchanted Pathways of Japan"

Welcome to a world where discovery meets tranquility—where every step leads to a new horizon of cultural riches and shared moments of awe. "How We Travel" invites you to immerse yourself in an exceptional experience crafted for those who seek more than just sights, but a deeper connection to the places they visit.

Led by Lauren Howard and knowledgeable local guides with a deep passion for Japan, our tour is meticulously designed to blend immersive cultural experiences with leisurely paced exploration and moments that simply can't be replicated. From the serene whispers of ancient temples to the exuberant hustle of metropolitan delights, each day unveils a new chapter of Japan not often seen by the casual traveler.

Indulge in the authentic flavors of Japanese cuisine, wander through vibrant backstreets, and enjoy exclusive access to cultural experiences that go beyond the typical tourist paths. Our small group setting ensures a personal and intimate journey, allowing for spontaneous discoveries and genuine interactions with local culture.

We would love for you to join Lauren on our "Enchanted Pathways of Japan" tour and step into a journey that celebrates the spirit of exploration and camaraderie. With us, every adventure not only satisfies the wanderlust but enriches your soul—leaving you inspired and eager for your next great adventure. Let's discover Japan together and create memories that last a lifetime.

May 12 - Monday



DEPARTURE 15:40 - Australian Eastern Standard Time Depart from Port Macquarie Airport

AIRLINE	FLIGHT NUMBER
Qantas	QF 2167



Port Macquarie Airport

Oliver Dr., Port Macquarie, NSW, AU, 2444
+61 2 6581 8744



ARRIVAL 16:45 - Australian Eastern Standard Time Arrive at Sydney (Kingsford Smith) Airport (SYD)

AIRLINE	FLIGHT NUMBER	TERMINAL
Qantas	QF 2167	3

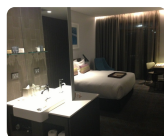


Sydney (Kingsford Smith) Airport (SYD)

Airport Dr., Mascot, NSW, AU, 2020
+61 2 9667 9111



CHECK-IN 17:30 - Australian Eastern Standard Time Check in at Rydges Sydney Airport Hotel



Rydges Sydney Airport Hotel

8 Arrivals Ct, Mascot, NSW, AU, 2020
(02) 9313 2500

May 13 - Tuesday



CHECK-OUT 5:15 - Australian Eastern Standard Time Check out at Rydges Sydney Airport Hotel



Rydges Sydney Airport Hotel
8 Arrivals Ct, Mascot, NSW, AU, 2020
(02) 9313 2500



DEPARTURE 8:15 - Australian Eastern Standard Time
Depart from Sydney (Kingsford Smith) Airport (SYD)

AIRLINE	FLIGHT NUMBER	TERMINAL
JAL	JL 52	1



Sydney (Kingsford Smith) Airport (SYD)
Airport Dr., Mascot, NSW, AU, 2020
+61 2 9667 9111



ARRIVAL 17:05 - Japan Standard Time
Arrive at 東京国際空港 / 羽田空港 (Tokyo International Airport) (HND/RJTT)

AIRLINE	FLIGHT NUMBER	TERMINAL
JAL	JL 52	3



東京国際空港 / 羽田空港 (Tokyo International Airport) (HND/RJTT)
羽田空港3-3-2, 東京, 東京都, 日本, 144-0041
+81 3-5757-8000



ARRIVAL 21:00 - 30 min - Japan Standard Time
Transfer from Airport to Hotel

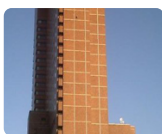


CHECK-IN 21:00 - Japan Standard Time
Check in at Shinjuku Prince Hotel
Location

This urban hotel is located about 1 mile from the tourist heart of Tokyo. Guests can reach the nearest shops in about 2 miles.

Facilities

The hotel has 571 rooms, which are located on 25 stories and are reachable by an elevator. The friendly staff at the reception desk are happy to answer any questions. Amenities include a baggage storage service, a safe and a drinks machine. Wireless internet access is provided in public areas. The tour desk offers assistance with booking excursions. The hotel has a range of facilities for guests with disabilities. The hotel has wheelchair-accessible facilities. There are a number of shops as well. Guests arriving by car can park their vehicles in the parking lot. Other services include a 24-hour security service, medical assistance, a laundry service and a coin-operated laundry. A fax machine is available for guests' business needs.



Shinjuku Prince Hotel
1-30-1 Kabuki-cho, Tokio, Japan

May 14 - Wednesday



Day 2 - 14th May 2025

Tokyo is the ultimate 24-hour city, but look behind its frantic, high-tech frontage and you'll find plenty of tranquil backstreets and old temples to explore; today take a tour by coach of this fascinating city.

Free time at leisure in the morning.

In the afternoon, meet with your guide in the hotel lobby for a departure to Asakusa by private coach.

Begin your exploration of Tokyo with a visit to the nearby area of Asakusa. Asakusa was a major entertainment district during the Edo period (1603–1868) and continued as such for much of the 20th century. Today, it still retains a bit of the atmosphere of what Tokyo must have been like in the days of old. Here you can also visit Sensoji, also known as Asakusa Kannon, Tokyo's most famous and oldest temple; the original structure was built in the 7th century. The thoroughfare leading up to the temple is called Nakamise. This shopping street has been providing temple visitors with a variety of traditional, local snacks and souvenirs for centuries.

Visit to the Imperial Palace East Gardens, created on land that had formerly formed part of the Honmaru, Ninomaru and Sannomaru areas of Edo Castle, during the construction of the Imperial Palace in Tokyo. Many sites of historical interest remain on the vast area of 210,000 square meters, with a wide variety of trees and flowers in four seasons. Then visit the Imperial Palace East Gardens, created on land that had formerly formed part of the Honmaru, Ninomaru and Sannomaru areas of Edo Castle, during the construction of the Imperial Palace in Tokyo. Many sites of historical interest remain on the vast area of 210,000 square meters, with a wide variety of trees and flowers in four seasons.

Next visit is Meiji Shrine, a shrine dedicated to the deified spirits of Emperor Meiji and Empress Shoken. The grounds contain a large, wooded area and walking paths where one can escape the nearby bustling city and enjoy a stroll amidst natural surroundings.

You will stop by Shibuya, which is a center for youth fashion and culture; packed with many shops, restaurants, and nightclubs, this area is always bustling. The Shibuya Scramble Crossing is one of the busiest intersections in the world with thousands of pedestrians crossing from all directions each day.

A private coach will take you back to your hotel.

Welcome Dinner

Meals: Breakfast and Dinner

Accommodation: Shinjuku Prince Hotel or similar

May 15 - Thursday



Day 3 - 15th May 2025

Day of leisure.

Meals: Breakfast

Accommodation: Shinjuku Prince Hotel or similar

May 16 - Friday



Day 4 - 16th May 2025

Breakfast and check-out at your hotel.

Meet with your guide at the hotel for a departure to **Kawaguchiko** by private coach.

The Fuji Shibazakura Festival is held typically from mid April to late May or early June. The best time to see the flowers varies from year to year but usually falls into the first three weeks of May. Approximately 800,000 stalks of shibazakura of five varieties are on display, producing delightful fields of pink, white and purple colors in different hues.

Lunch at local restaurant

After lunch visit **Itchiku Kubota Art Museum** to view the elaborate dyed silk creations. Kubota Itchiku (1917-2003) was the artist who revived the lost art of Tsujigahana silk dyeing, used to decorate elaborate [kimono](#) during the [Muromachi Period \(1333-1573\)](#). In his early twenties he was so inspired by a fragment of Tsujigahana textile exhibited at the Tokyo National Museum, that he devoted the rest of his life to recreating and mastering the labor-intensive silk dyeing technique.

A private coach will take you to your hotel.

Dinner at the hotel.

Meals: Breakfast, Lunch and Dinner

Accommodation: Fuji Speedway Hotel or similar



Check in at Fuji Speedway Hotel

Location

This hotel welcomes guests in Shizuoka.

Facilities

The friendly staff at the reception desk are happy to answer any questions. A baggage storage service, a safe and a drinks machine are available. Wireless internet access in public areas allows guests to stay connected. The hotel offers a number of facilities for guests with disabilities. The hotel has wheelchair-accessible facilities and an elevator. Guests arriving by car can park their vehicles in the garage or in the parking lot (no extra charge). Other services include a 24-hour security service, medical assistance, a transfer service, room service, a laundry service and a coin-operated laundry. Active guests can make use of the bicycle rental service to explore the surrounding area. A fax machine is available for guests' business needs.



Fuji Speedway Hotel

645 Omika, Shizuoka, Japan

May 17 - Saturday



Day 5 - 17th May 2025

**Please prepare and bring your luggage to the front desk. It will be delivered to your hotel in Takayama. Please take the necessities for 1N in Takayama.*

Meet with your guide at the hotel for a departure to **Lake Ashi** by private coach.

Because of its location, east of **Mt. Fuji**, you may have a chance to catch a glimpse, or even prolonged gaze, of Mt. Fuji on various occasions throughout the day. But keep in mind that there are no guarantees, as the mountain is known to be notoriously shy, depending on the weather.

First visit is **Owakudani**. The first thing you will notice when arriving in Owakudani is the smell of sulfur coming from this active volcano. There are walking trails around Owakudani that lead to steam vents and bubbling pools. The **blackened eggs** they sell in Owakudani are boiled in the volcano's natural hot springs and are said to prolong life by seven years!

**Owakudani is generally accessible by ropeway; however, as this area is an active volcanic zone, hiking trails may be closed due to volcanic gasses. People with respiratory problems should consult their physician before visiting the area.*

From Owakudani, you will continue your journey via **ropeway** to **Togendai**.

The next stop will be **Togendai** where you will board a “**pirate ship**” modeled after old European battleships, taking you to **Hakonemachi**. Both Togendai and Hakonemachi are ports on the shore of **Lake Ashi**, which is in fact an enormous volcanic crater created by an eruption some 3,000 years ago. This will be a sightseeing cruise where chances are you will get a great view of Mt. Fuji that also reflects off of the lake. **The pirate ship is subject to rescheduling or cancellation depending upon weather conditions.*

A private coach will take you to Odawara station.

Lunch – Bento box on the train.

Board the bullet train to Nagoya then will change onto the Wide View Hida limited express for one of the most scenic train journeys in Japan, winding your way through tall mountains and stunning gorges to Takayama.

In the afternoon arrive in Takayama and transfer to your hotel.

Meals: Breakfast, Lunch and Dinner

Accommodation: Associa Takayama Resort or similar



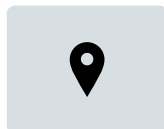
Check in at Associa Takayama Resort

Location

This hotel is located in Takayama.

Facilities

The hotel has 3 elevators and features 290 rooms and a suite. The friendly staff at the reception desk are happy to answer any questions. Amenities include a baggage storage service, a safe and a drinks machine. Wireless internet access in public areas allows guests to stay connected. The hotel has wheelchair-accessible facilities. There are a number of shops, including a supermarket. Further services include a transfer service, a laundry service, a coin-operated laundry and a hotel shuttle bus. Complimentary newspapers are available.



Associa Takayama Resort

1134 Echigo-cho, Takayama-shi, Japan

May 18 - Sunday



Day 6 - 18th May 2025

Breakfast at hotel.

After breakfast, meet with your guide at the hotel for a departure to Sannomachi Street by private coach.

The walk to the exhibition hall will lead you through Takayama's beautifully preserved **Old Town**. In Old Town, especially on **Sannomachi Street**, you will find breweries and tea houses that have been in business for centuries.

A private coach will take you to Shirakawa-go.

Shirakawa-go is one of Gifu's must-visit destinations and was recognized as a **UNESCO World Heritage Site** in 1995. It is famous for its traditional gassho-zukuri farmhouses, some of which are more than 250 years old. Shirakawa-go Ogimachi is the largest hamlet of gassho-zukuri-style houses in Japan. “Gassho-zukuri” translates to “constructed like praying hands,” a reference to the shape of the buildings.

At the **Kanda House** in Shirakawa-go, you can see what the traditional farmhouses looked like from the inside.

Lunch at a local restaurant.

Explore Shirakawago until time to return back to the hotel by a private coach.

Meals: Breakfast, Lunch and Dinner

Accommodation: Associa Takayama Resort or similar

May 19 - Monday



Day 7 - 19th May 2025

Check-out after breakfast at your hotel.

After breakfast, meet with your guide at the hotel for a departure to the Miyagawa Morning Market by private coach.

The **Miyagawa Morning Market** is one of Japan's biggest morning markets, with stalls selling various local crafts and produce. This is a great opportunity to try some of the region's delicious fruit and vegetables, as the only people allowed to set up stalls are independent farmers and craftsmen.

Next you will have washi paper making experience at Gokayama.

After that a private coach will take you to Kanazawa.

First visit in Kanazawa is The **Kenrokuen** garden, which is classified as one of Japan's 3 Most Beautiful Gardens. And because blooming times were carefully considered during its creation, in one way or another, the garden remains beautiful year-round. Kenrokuen literally translates to "Garden of the Six Sublimities." According to an ancient East Asian landscape theory, the garden possesses all six essential attributes that make a perfect garden.

A private coach will take you to your hotel.

In the evening, meet with your guide in the hotel lobby for a departure to **Higashi Chaya and Kazue machi** by private coach.

Higashi Chaya District is the largest and by far the most interesting of Kanazawa's Geisha Districts. Many of the buildings along the central street now house cafes and shops.

Kazue-machi Chaya District is second-largest of the city's three traditional entertainment districts. In this historic area, right next to Asanogawa bridge, one finds beautiful, old edo-period buildings, lined up along the Asano River.

Dinner at local restaurant.

A private coach will take you back to your hotel.

Meals: Breakfast and Dinner

Accommodation: Nikko Kanazawa or similar



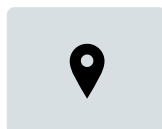
Check in at Nikko Kanazawa

Location

Located in Kanazawa, this urban hotel has the perfect ambience for business travelers.

Facilities

The hotel welcomes guests in a 30-story building with an elevator and 254 rooms. Guests are warmly welcomed by multilingual staff at the 24-hour reception desk in the lobby. Check-in/check-out service is available around the clock. Amenities include a baggage storage service and a safe. Wireless internet access is provided in public areas. The hotel offers a number of facilities for guests with disabilities. There are a number of shops, including a souvenir shop. Additional facilities include a newspaper stand. Guests arriving by car can park their vehicles in the garage or in the parking lot. Further services and facilities include a car rental service, room service, a laundry service, a hairdresser and a coin-operated laundry. A bicycle rental service provides all the necessary equipment for exploring the surrounding area. Complimentary newspapers are available. A fax machine is available for guests' business needs.



Nikko Kanazawa

2 15 1 Hon Machi, Kanazawa-shi, Japan

May 20 - Tuesday



Day 8 - 20th May 2025

**Please prepare and bring your luggage to the front desk. It will be delivered to your hotel in Osaka. Please take the necessities for 1N in Osaka.*

Breakfast at the hotel.

In the morning at your own leisure until check out time. (you can visit Omicho Market on your own).

Meet with your guide in the hotel lobby for a transfer to Kanazawa station on foot.

At Kanazawa station you will board the bullet train taking you to the city of Tsuruga where you will switch to a Limited Express bound for Shin Osaka. (4 hours)

Upon arriving at Shin Osaka station, a private coach will take you to your hotel.

The remainder of the day is at leisure.

Meals: Breakfast

Accommodation: Citadines Namba or similar



Check in at Citadines Namba Osaka Location

This complex warmly welcomes guests in Osaka.

Facilities

The friendly staff at the reception desk are happy to answer any questions. Amenities include a baggage storage service, a safe and a drinks machine. Wireless internet access is provided in public areas. The hotel offers a number of facilities for guests with disabilities. The hotel has wheelchair-accessible facilities and an elevator. There are a number of shops as well. Children can enjoy the playground. Additional amenities include a TV room and a playroom. Parking spaces are available to guests traveling by car (no extra charge). Other services include a 24-hour security service, medical assistance, a transfer service, room service, a laundry service, a coin-operated laundry and a hotel shuttle bus. To assist guests with their business and communication needs, the business center offers a fax machine.



Citadines Namba Osaka

3-5-25 Nippombashi, Osaka-shi, Japan

May 21 - Wednesday



Day 9 - 21st May 2025 Osaka

Breakfast at the hotel.

Free time at leisure in the morning.

In the afternoon, meet with your guide at the hotel lobby for a departure to Osaka castle by private coach.

First have lunch at **Dotonbori District**, a restaurant mecca which has long-been referred to as Osaka's former entertainment and pleasure district. A short walk from this street leads to the touristy Ebisubashi with the famous billboard of the Glico Running Man and a view of Dotonbori River. There are a range of shopping places here for everyone and for all budgets—cheap 100 yen shops, mid-range markets and the upscale luxurious department stores.

After lunch visit **Osaka Castle** is one of Japan's most famous castles, and it played a major role in the unification of Japan during the sixteenth century. The contrast of the venerable Osaka Castle Park with its large stone walls versus the surrounding skyscrapers provides an excellent example of the balance between modern Japan and its rich cultural heritage.

Next stop is the **Umeda Sky Building**. You will enjoy the unobstructed 360-degree view of Osaka Bay and surrounding cities from the open-air observatory.

A private coach will take you back to your hotel.

Meals: Breakfast

Accommodation: Citadines Namba or similar

May 22 - Thursday



Day 10 - 22nd May 2025 Osaka – Hiroshima

**Please prepare and bring your luggage to the front desk. It will be delivered to your hotel in Kyoto. Please take the necessities for 1N in Hiroshima.*

Breakfast at your hotel.

After breakfast, meet with your guide at the hotel for a departure to Shin Osaka station by private coach.

At Shin Osaka station, you will board a bullet train bound for Hiroshima.

Upon arriving at Hiroshima station, a private coach will take you to Miyajimaguchi port by private coach, where we will board a ferry to **Miyajima Island**.

Miyajima is a small, sacred island located in the Inland Sea. It has been a holy place of Shintoism since the earliest times. Here you will find perhaps the most photographed site in Japan: The **Floating Torii Gate**, which has been designated a UNESCO World Heritage Site and is considered one of Japan's 3 Most Beautiful Views. And visit **Itsukushima Shrine**. The shrine complex includes a prayer hall, main hall, and noh theater stage, all connected by boardwalks above the sea, making it a unique and revered destination.

Next, a private coach will take you to Peace Memorial Park.

The area where **Peace Memorial Park** now lies was ground zero for the atomic bomb on August 6, 1945. After the bombing, it was decided that the area was not to be redeveloped but instead devoted to peace memorial facilities. In the park, you will also see the **A-Bomb Dome**, also known as the **Hiroshima Peace Memorial**. The A-Bomb Dome is what remains of the former Prefectural Industrial Promotion Hall. After the bomb exploded, it was one of the few buildings to remain standing. Today, it is a UNESCO World Heritage Site.

*If you would like to visit Peace Memorial Museum or Orizuru tower- own expense.

A private coach will take you back to the hotel.

In the evening, meet with your guide in the hotel lobby for a departure to **Okonomiyaki cooking class** on foot.

Tonight you will have okonomiyaki cooking class and have dinner there.

Return to the hotel on foot.

Meals: Breakfast and Dinner

Accommodation: Granvia Hiroshima or similar



Check in at Hotel Granvia Hiroshima

Location

Situated on a main road, this urban hotel welcomes guests in Hiroshima.

Facilities

The hotel has an elevator and features 403 rooms, including 4 suites and 214 single rooms. Multilingual staff at the reception are happy to assist guests at the reception desk around the clock. Check-in and check-out are available 24 hours a day. Amenities include a baggage storage service, a safe and a drinks machine. Wireless internet access allows guests to stay connected while on vacation. The hotel has a range of facilities for guests with disabilities. Wheelchair-accessible facilities are available. A number of shops, including a souvenir shop, are great for shopping or just browsing. Additional facilities include a newspaper stand. Guests arriving by car can park their vehicles in the garage or in the parking lot (for a fee). Further services and facilities include a 24-hour security service, translation services, room service, a laundry service, a hairdresser and a coin-operated laundry. A business center with fax machine and projector is available.



Hotel Granvia Hiroshima

1-5 Matsubara Cho, Hiroshima, Japan

May 23 - Friday



Day 11 - 23rd May 2025 Hiroshima – Kyoto

Breakfast and check-out at hotel.

After breakfast, meet with your guide at the hotel for a transfer to Hiroshima station on foot.

At Hiroshima station, you will board a bullet train bound for Kyoto.

Upon arriving at Kyoto station, a private coach will take you to Nijo Castle

Nijo Castle was first constructed in 1603 by Tokugawa Ieyasu, founder of the Tokugawa Shogunate and first shogun of the Edo Period (1603–1876), as his Kyoto residence. The castle consists of two rings of fortification, outer and inner moats, the Ninomaru Palace, the ruins of the Honmaru Palace, various support buildings, and several gardens. Visitors to the palace will immediately notice the creaking floorboards. This intentional feature is called a “nightingale floor (uguisu bari)” and is designed to alert the inhabitants to intruders. The castle was designated a UNESCO World Heritage Site in 1994.

Next visit to **Kinkakuji Temple**, also known as the Golden Pavilion, was originally designated as a holiday villa for the shogun Ashikaga Yoshimitsu in 1397. After the death of Yoshimitsu, according to his wishes, it was converted into a Zen temple by his son. It is now one of Kyoto's most famous temples, with its top two floors completely covered in gold leaf.

A private coach will take you back to your hotel.

Meals: Breakfast

Accommodation: Hilton Garden Inn Kyoto or similar



Check in at Hilton Garden Inn Kyoto Shijo Karasuma Location

This hotel warmly welcomes guests in Kyoto.

Facilities

The friendly staff at the reception desk are happy to answer any questions. To ensure guests a comfortable and relaxing stay, the hotel provides various services and facilities, including a baggage storage service, a safe, an ATM, a laundry service, a coin-operated laundry and a smoking area. Wireless internet access is provided in public areas (no extra charge). The hotel offers various facilities for guests with disabilities. Wheelchair-accessible facilities are available. Everyday necessities can be purchased at the supermarket.



Hilton Garden Inn Kyoto Shijo Karasuma

397 Gojokarasumacho, Kyoto, Japan

May 24 - Saturday

Day 12 - 24th May 2025 Kyoto – Nara – Kyoto



Breakfast at hotel

After breakfast, meet with your guide in the hotel lobby for a departure to tea ceremony by private coach.

You will have an authentic **tea ceremony experience** at a temple/machiya townhouse. The best quality tea powder is used and seasonal sweets from a traditional sweet maker will be provided. The tea ceremony teacher will instruct you on how to eat the sweets and how to drink the tea, after that, the teacher will show you how to make tea yourself.

Next visit **Fushimi Inari Shrine** is home to over 10,000 red torii gates that straddle a network of paths up the mountain behind the temple. Fushimi Inari is the most important of several thousand shrines dedicated to Inari, the Shinto god of rice. Fushimi Inari Shrine has ancient origins, predating the capital's move to Kyoto in 794. The torii gates have been used in films and in an incalculable number of photos over the years.

After that, a private coach will take you to the town of Nara.

During the eighth century, **Nara** was Japan's capital for 74 years, and many of the temples and shrines built at that time still stand today.

Lunch at Ryozanpaku or similar

Visit **Todaiji Temple**, one of the world's largest wooden structures and home to Japan's largest statue of Buddha. The park surrounding the temple is called **Nara Park** but is referred to by many as "Deer Park" due to the population of more than one thousand tame deer who freely roam the streets and will bow their heads in exchange for a treat.

The next stop is Nara's most celebrated shrine, **Kasuga Taisha**. Established in 768 AD, the shrine is dedicated to the deity tasked with the protection of the city and is famous for its hundreds of bronze and stone lanterns, which have been donated by worshippers over the years.

A private coach will take you back to your hotel in Kyoto.

Meals: Breakfast and Lunch

May 25 - Sunday



Day 13 - 25th May 2025 Kyoto

Breakfast at hotel.

Free time at leisure in the morning.

In the afternoon, meet with your guide in the hotel lobby for a departure to Arashiyama by private coach.

You will travel to **Nonomiya Shrine**, but along the way, your path will lead you through Arashiyama's magnificent **bamboo groves**, which are unlike any other place in Japan. This bamboo has been used to manufacture various products, such as baskets, cups, boxes, and mats, at local workshops for centuries.

Nonomiya Shrine is a Shinto shrine where, in ancient times, unmarried imperial princesses stayed for a year or more to purify themselves. The shrine is referenced in numerous works of literature, most notably *The Tale of Genji*, considered by most scholars to have been the world's first novel. Unlike most shrines, which feature iconic, vivid, reddish orange torii gates, Nonomiya Shrine has rare, black torii gates made to resemble unstripped timber.

Kiyomizu Temple, which translates to "pure water temple," derives its name from the waters that spring from the east mountains and flow to the site. Progressing through the temple complex, enjoy a variety of sights, including spectacular views of Kyoto city as well as the 13-meter-high wooden veranda of the temple's main hall, built without using a single nail.

You will continue our walking tour and head towards the **Higashiyama** district. The Higashiyama District along the lower slopes of Kyoto's eastern mountains is one of the city's best preserved historic districts, and a great place to experience traditional old Kyoto. **Ninenzaka and Sannenzaka** are the streets in Higashiyama lined by small shops, cafes and restaurants which have been catering to tourists and pilgrims for centuries. These businesses retain their traditional design, and they continue to serve customers today, selling local specialties such as Kiyomizu-yaki pottery, sweets, pickles, crafts and other souvenirs.

Farewell dinner at local restaurant at Gion.

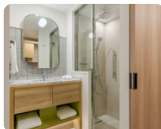
A private coach will take you back to your hotel.

Meals: Breakfast and Dinner

May 26 - Monday



CHECK-OUT 12:00 - Japan Standard Time
Check out from Hilton Garden Inn Kyoto Shijo Karasuma



Hilton Garden Inn Kyoto Shijo Karasuma
 397 Gojokarasumacho, Kyoto, Japan



DEPARTURE 12:00 - Japan Standard Time
Transfer from Kyoto Hotel to Airport

Meet your English-speaking assistant at the hotel lobby and depart for Kansai Airport by private coach.

Meals: Breakfast



DEPARTURE 15:00 - Japan Standard Time
Depart from 関西国際空港 (Kansai International Airport - KIX/RJBB)

AIRLINE	FLIGHT NUMBER	TERMINAL
JAL	JL 224	1



関西国際空港 (Kansai International Airport - KIX/RJBB)
 泉州空港北1, 泉佐野市, 大阪府, JP, 549-0001
 +81 72-455-2500



ARRIVAL 16:15 - Japan Standard Time
Arrive at 東京国際空港 / 羽田空港 (Tokyo International Airport) (HND/RJTT)

AIRLINE	FLIGHT NUMBER	TERMINAL
JAL	JL 224	1



東京国際空港 / 羽田空港 (Tokyo International Airport) (HND/RJTT)
 羽田空港3-3-2, 東京, 東京都, 日本, 144-0041
 +81 3-5757-8000



DEPARTURE 19:30 - Japan Standard Time
Depart from 東京国際空港 / 羽田空港 (Tokyo International Airport) (HND/RJTT)

AIRLINE	FLIGHT NUMBER	TERMINAL
JAL	JL 51	3



東京国際空港 / 羽田空港 (Tokyo International Airport) (HND/RJTT)
 羽田空港3-3-2, 東京, 東京都, 日本, 144-0041
 +81 3-5757-8000



DEPARTURE 22:00 - Japan Standard Time
Depart from 東京国際空港 / 羽田空港 (Tokyo International Airport) (HND/RJTT)

AIRLINE	FLIGHT NUMBER	TERMINAL
Qantas	QF 60	3

東京国際空港 / 羽田空港 (Tokyo International Airport) (HND/RJTT)
 羽田空港3-3-2, 東京, 東京都, 日本, 144-0041
 +81 3-5757-8000

May 27 - Tuesday



ARRIVAL 6:10 - Australian Eastern Standard Time
Arrive at Sydney (Kingsford Smith) Airport (SYD)

AIRLINE	FLIGHT NUMBER	TERMINAL
JAL	JL 51	1



Sydney (Kingsford Smith) Airport (SYD)
 Airport Dr., Mascot, NSW, AU, 2020
 +61 2 9667 9111



DEPARTURE 10:55 - Australian Eastern Standard Time
Depart from Sydney (Kingsford Smith) Airport (SYD)

AIRLINE	FLIGHT NUMBER	TERMINAL
Qantas	QF 2162	3



Sydney (Kingsford Smith) Airport (SYD)
 Airport Dr., Mascot, NSW, AU, 2020
 +61 2 9667 9111



ARRIVAL 12:00 - Australian Eastern Standard Time
Arrive at Port Macquarie Airport

AIRLINE	FLIGHT NUMBER
Qantas	QF 2162



Port Macquarie Airport
 Oliver Dr., Port Macquarie, NSW, AU, 2444
 +61 2 6581 8744



Tour Costs

Twin/Double Share: \$15,795.00 per person twin/double share including economy airfares, taxes and surcharges

Single Supplement: \$2995.00

Business Class Upgrades available upon request

A non-refundable \$1500.00 deposit is due per person to confirm a booking.

Remaining Balance is due on the 13th January 2025

Please note that although we will endeavour to keep the itinerary as per above there are circumstances outside our control that may cause alternations to the itinerary.



Terms and Conditions

Terms & Conditions

Please read the following terms and conditions carefully. You must not make any booking unless you are 18 years of age or older and understand and agree with the following terms and conditions.

These terms and conditions apply to bookings you make with a Consultant (instore, over the phone or by email) as well as online bookings made via our website. These terms and conditions govern our relationship with you. Once we accept a booking from you on behalf of a Supplier, you will also have a separate contract with the Supplier, which will be governed by other terms and conditions. It is your responsibility to make yourself aware of those other terms and conditions.

EXECUTIVE SUMMARY

Although you should read all of the terms and conditions, the following is a summary of the most important:

- Prices, including, in some cases, of confirmed bookings, may be subject to change.
- Some confirmed bookings are non-refundable if cancelled by you and it is your responsibility to check if this applies.
- We will be entitled to retain our service fees even if a booking is cancelled or does not proceed for any reason which is not our fault.
- It is your responsibility to make yourself aware of all information relevant to your travel plans, including but not limited to visa requirements and health precautions.
- We act as an agent for Suppliers from whom we may receive additional fees or other incentives.
- We are not liable for the accuracy of any published Supplier content including websites and brochures.

PRICES AND TAXES

All prices that we quote are in Australian Dollars and based on twin share accommodation unless otherwise stated. Please note that prices quoted are subject to change at the discretion of the Supplier prior to booking. Price changes may occur after booking because of matters outside our control which increase the cost of the Product. Such factors include adverse currency fluctuations, fuel surcharges, taxes and airfare increases. Please contact your Consultant for up-to-date prices. Even if paid in full, a price may change because of matters outside our control.

Prices include all applicable taxes requiring payment prior to departure, and may be subject to adjustment in the event of an increase in those taxes. On other occasions, you may be liable for taxes in addition to the quoted price of the Product. For example, there may be a local tax charged at some airports or resorts.

PRODUCTS

All Products that we quote on are subject to availability and may be withdrawn or varied by the Supplier without notice.

FEES AND SURCHARGES

A variety of fees and surcharges may be payable to us, including booking or reservation fees, cancellation and amendment fees, credit card merchant fees, insurance claim processing fees or fees for ad-hoc services performed as required. You may see our current [schedule of professional service fees](#).

Payment by credit card will incur a surcharge to offset our cost of acceptance of payment by credit card. The surcharge varies depending on credit card type, it is your responsibility to advise the correct credit card type to ensure that the appropriate surcharge is applied. We accept no responsibility for an inappropriate surcharge being applied if the correct card type has not been advised, and the surcharge applied shall not be refundable.

You authorise us to charge all monies payable by you in relation to any booking we make on your behalf or other services we have procured or provided to the credit card or debit card designated by you. If payment is not received from the card issuer or its agents for any reason, you agree to pay us all amounts due immediately on demand.

CHANGE AND CANCELLATION FEES

Be aware that some confirmed bookings are not refundable if cancelled, and also may not be transferable to another date or otherwise changed. Alternatively, a change may only be permissible subject to payment of an additional fee or charge. It is your responsibility to check if a booking is non-refundable or will incur charges for changing it before placing the booking.

Changes and cancellations of confirmed bookings may incur fees from Suppliers in addition to our service fees. Suppliers' fees are outlined in their relevant terms and conditions.

REFUNDS

Your entitlement to a refund for cancelled bookings is subject to the relevant Supplier's terms and conditions.

If you are entitled to a refund then, subject to the Supplier's terms and conditions, we will arrange for it to be supplied to us on your behalf, unless we expressly agree with you otherwise.

If we are managing or arranging a refund for a cancelled booking on your behalf it will not be paid to you until the Supplier provides the refund to us, and we will not be liable for any delay on the part of the Supplier. Be aware that typically airlines will take between 60-90 days to process a refund.

Please note that if we are entitled to a service fee for placing a booking, we will remain entitled to this fee if you cancel the booking or the Supplier fails to provide you with the Product for any reason (other than our default), including in an event of Force Majeure. We will be entitled to deduct our service fee from any refund we receive on your behalf before remitting the balance to you.

DEPOSITS AND PAYMENTS

You will be required to pay a deposit (or deposits) when booking. The deposit amount varies depending on the Product booked and lead time to travel. In some instances, full payment is required at the time of booking and your Consultant will advise the deposit amount at the time of booking. All deposits are non-refundable for changes of mind or cancellations by you (subject to your rights under the Australian Consumer Law). Where a deposit has been collected, final payment is required no later than six weeks prior to departure. Failure to make payment by the due date may result in your booking being cancelled and deposits forfeited.

Payments made by direct deposit may take up to three business days to process. If you are paying by this method, you will need to make the payment at least three business days prior to the actual due date. You must notify your Consultant of your payment once it has been made.

Payments made by personal cheque (excluding bank cheques) require five business days to process. If you are paying by this method, you will need to make the payment at least five business days prior to the actual due date. You agree not to stop payment of the cheque even when you cancel a booking. You agree that we may apply the proceeds of the cheque to satisfy any liability you have to us or to a Supplier, including any liability in respect of cancellation fees, before refunding the balance to you.

INFORMATION

Our responsibility is solely to arrange a booking of a Product in accordance with your instructions. It is your responsibility to make yourself aware of all information that it is necessary or desirable to know in order to make optimum use of the Product and to undertake travel generally. We strongly recommend that you read our [travel information](#) which may be relevant, especially in relation to passport and visa requirements. Please note that this information is provided as a guide only, and although it is accurate to the best of our knowledge, we do not warrant that it is completely up-to-date at all times. Further, we do not warrant that it is comprehensive and it may not address a topic that is relevant to your travel plans. It is your responsibility to further investigate and confirm any matters that are applicable to you.

SPECIAL REQUIREMENTS

You must inform your Consultant regarding any special requirements you may have for your travel arrangements such as special meal and seating requests, room type or disabled access prior to making a booking. If you do not specifically inform us we will assume that you do not have any such requirements, and the booking will be made on that basis.

FREQUENT FLYER AND LOYALTY PROGRAMS

When booking with one of our Consultants, it is your responsibility to let them know your frequent flyer membership details (or other applicable loyalty program details) for inclusion in your booking. Notwithstanding that your details may be included in the booking, we cannot guarantee that the Supplier will credit you with points for your booking.

TRAVEL DOCUMENTS

If you have booked with a Consultant, it is your responsibility to collect all travel documents from us prior to travel. As a general rule, your travel documents will be available for collection two weeks prior to departure, however this will depend on your individual arrangements. Please contact your Consultant to confirm when your travel documents are ready for collection. If you have booked online, you should print out and retain your travel documents as provided to you by the website (or in a confirmation email we send you). You must review your travel documents carefully and advise us immediately of any errors in names, dates or timings.

AGENCY

We act as an agent for and sell various travel related products as an agent on behalf of numerous transport, accommodation and other service providers, such as airlines, coach, rail and cruise line operators, as well as travel wholesalers ("Suppliers"). We may receive fees, commissions, gifts or financial incentives from Suppliers in respect of Products we advise you of or arrange on your behalf. Any brochures provided by us to you are supplied by Suppliers, or are prepared by us based on content supplied by Suppliers, and we accept no liability for errors in that material. Your oral or written instructions to us are authority for us to make travel bookings on your behalf and to arrange relevant contracts between you and the applicable Supplier. Notwithstanding this authority, we act as an agent for Suppliers only and do not have any fiduciary duty to you. We exercise care in the selection of reputable Suppliers, but we are not ourselves a provider of travel services and have no control over, or liability for, the Products provided by the Suppliers, who are third parties. All bookings are made on your behalf subject to the terms and conditions, including conditions of carriage and limitations of liability, imposed by the Supplier. We recommend that you read them before finalising the transaction and we can provide you with copies of the relevant terms and conditions on request.

Your legal rights and remedies in connection with the provision of Products are against the Supplier and, except to the extent a problem is directly and primarily caused by fault on our part, are not against us. Specifically, if for any reason (excluding fault on our part) any Supplier is unable to provide the Product for which you have contracted either at all, or to the requisite standard, your remedies are against that Supplier and not against us.

LIABILITY

To the extent permitted by law, we do not accept any liability in contract, tort or otherwise for any injury, damage, loss (including consequential loss), delay, additional expense or inconvenience caused directly or indirectly by the acts, omissions or default, whether negligent or otherwise, of third party providers over whom we have no direct control, an event of Force Majeure affecting you, us or a Supplier or any other event which is beyond our control or which is not preventable by reasonable diligence on our part. Under circumstances where our liability cannot be excluded and where liability may be lawfully limited, such liability is limited to the remedies required of us under applicable law (including the Australian Consumer Law). In particular, we disclaim any liability for any consequential loss, including loss of enjoyment or amenity. This liability clause is subject to your rights under the Australian Consumer Law and nothing in these terms and conditions is intended to limit any rights you may have under the Competition and Consumer Act 2010 (Cth).

Without limitation of the disclaimer of liability in the previous paragraph, any obligation we have to you will be suspended during the time and to the extent that we are prevented from, or delayed in, complying with that obligation by an event of Force Majeure.

Your rights with respect to a confirmed booking affected by an event of Force Majeure will be subject to the terms and conditions of the relevant Supplier.

GOVERNING LAW

If any dispute arises between you and us, the laws applicable in New South Wales will apply. You irrevocably and unconditionally submit to the exclusive jurisdiction of the courts of New South Wales, and waive any right that you may have to object to an action being brought in those courts.

SUMMARY OF OBLIGATIONS

Before making a booking, it is important that you meet the following requirements:

- You are over the age of eighteen (18) and have sufficient funds to pay for the travel services.
- You have read our terms and conditions and if booking for third parties warrant that you have their authority to do so and have conveyed these terms and conditions to them. You agree to indemnify us and the Supplier against any claims from third parties who have not in fact been properly informed.
- You have read the terms and conditions of any applicable Suppliers and agree to be bound by those.
- You are responsible for checking the accuracy of all documents provided to you.
- You are responsible for confirming departure times of any booked services at least 24 hours prior to travel.

- You warrant and acknowledge that you have accessed the Smartraveller website <http://smartraveller.gov.au> for any specific information in relation to your intended destination.
- You accept that passports, visas and other required identification documents are your responsibility.

DEFINITIONS

"we" and "us" means How We Travel (ABN 11 613 349 278), and where the context permits, its Consultants.

"Consultant" means an employee of How We Travel, with authority to book Products.

"you" means a person who makes a booking for a Product with us.

"your Consultant" means the particular Consultant or Consultants with whom you negotiate the booking of a Product.

"Supplier" means a third party company or person who provides Products, including a wholesaler of such Products.

"Product" means travel and holiday related products and services including accommodation, leisure activities and various forms of transport, including packaged combinations thereof.

"Travel documents" means any document (whether in electronic form or otherwise) used to confirm an arrangement with a Supplier, including (without limitation) airline tickets, hotel vouchers and tour vouchers.

"Force Majeure" means an act of God, peril of the sea, accident of navigation, war (including civil war), sabotage, riot, insurrection, civil commotion, coup d'état, national emergency, martial law, fire (including wildfire), explosion, lightning, flood, tsunami, cyclone, hurricane, tornado or other major weather event, earthquake, landslide, volcanic eruption or other natural catastrophe, epidemic, pandemic, quarantine, outbreaks of infectious disease or any other public health crisis, radiation or radioactive contamination, national strike or other major lack of availability of labour, raw materials or energy beyond the control of the affected party. For the avoidance of doubt, the inability of a party to make a profit or avoid a financial loss, changes in market prices or conditions, or a party's inability to perform its obligations due to insufficiency of finance does not in itself constitute Force Majeure.

To proceed with your booking, please complete our [customer acceptance form](#) to acknowledge that you have read and agree to our terms and conditions and professional service fees.

Inclusions and Exclusions

INCLUSIONS

- All international and domestic economy airfares
- All accommodation as specified in the itinerary (please note hotels listed above are subject to change)
- Meals as listed on the itinerary
- All transportation, daily tours, and entrance fees to scenic attractions as per the itinerary
- Welcome dinner
- Farewell dinner
- Luggage transfer from Mt Fuji – Takayama, Kanazawa – Hiroshima (1piece/pp)
- Washi Paper making workshop
- Okonomiyaki cooking class
- Bullet train Odawara – Nagoya, Kanazawa – Tsuruga, Shin Osaka – Hiroshima and Hiroshima - Kyoto (ordinary class)
- Limited express train Nagoya -Takayama, Tsuruga – Shin Osaka (ordinary class)
- Luggage transfer from Mt fuji – Kyoto, Kanazawa – Hiroshima, Hiroshima - Kyoto (1piece/pp)
- Tea ceremony in private temple
- English Speaking Guide for the tours and English-Speaking Assistant for Airport transfers

EXCLUSIONS

- Personal expenditure such as all drinks (including at meals) laundry service and souvenirs
- Camera and Video entry charges at Monuments/Forts etc
- Travel Insurance
- Arrival / departure transfers if not travelling on group flights



- Early / late check in/out not guaranteed, if requested it is at an additional cost
- COVID Related expenses due to testing